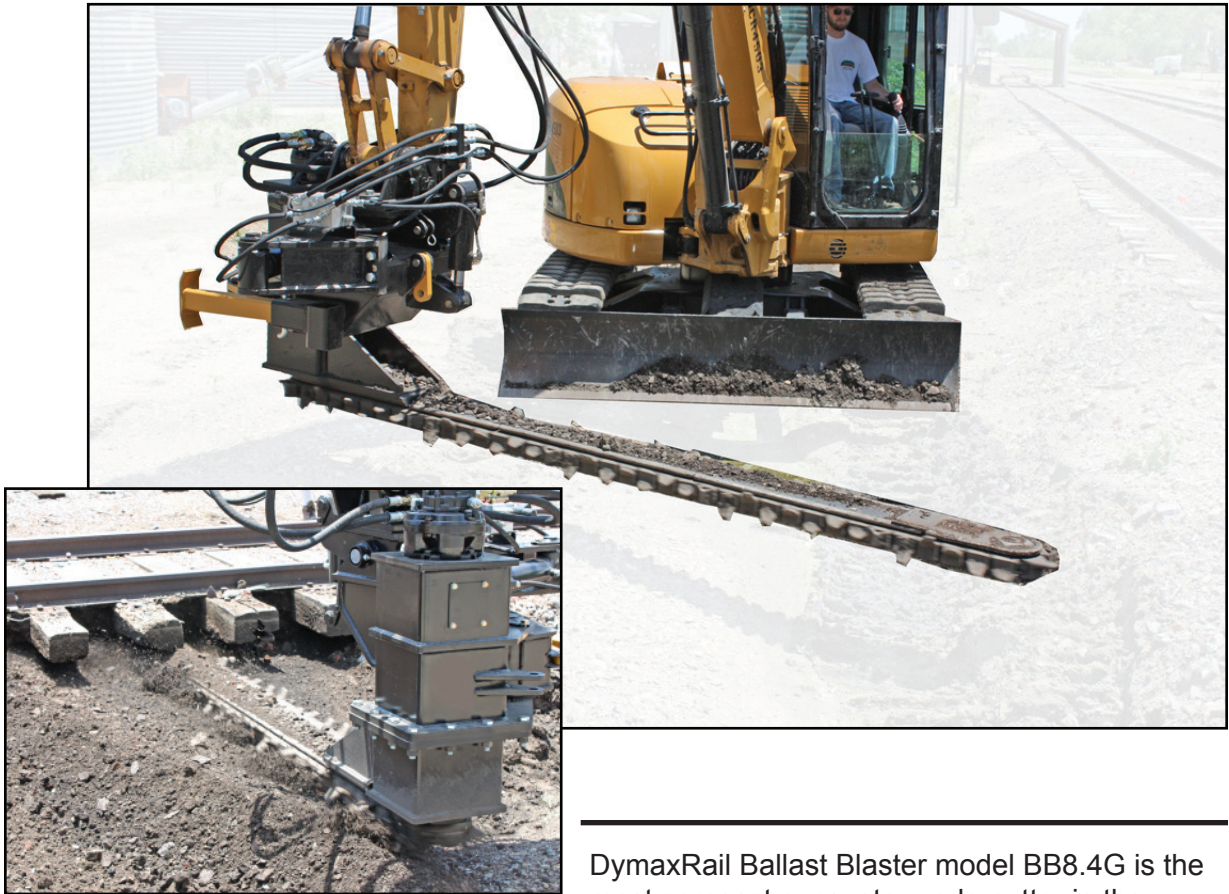




Ballast Blaster BB8.4G

For 10-13T Excavators



DymaxRail Ballast Blaster model BB8.4G is the most compact excavator undercutter in the

world, yet features the DymaxRail 4th Generation ballast undercutting technology to produce the best productivity on the market.

Ideal for 10T to 13T excavators, DymaxRail Ballast Blaster model BB8.4G undercuts fouled ballast from off track or high rail positions. The BB8.4G works with pin grab quick couplers, or can be made to pin to the excavator stick.

The DymaxRail BB8.4G is ideally suited for narrow gauge lines, but also works on standard gauge lines within some parameters.

For standard gauge lines, it is still ideal when needed to undercut in tight quarters that do not have enough room for larger machines.

One big benefit of the BB8.4G and the 10T to 13T machines is that special hauling permits may not be required, which makes for road trailering to and from job sites.

The Dymax BB8.4G boasts excellent power and quickly removes ballast from beneath tracks and features the latest in DymaxRail 4G undercutting technology.

Ballast Blaster BB8.4G

FEATURES & BENEFITS

- Patent Pending Blaster Bar System
- Direct Drive Hydraulics (no gear box)
- Higher torque output
- Multi-Position Bar Swing Cylinder
- Compact interface allows for easy road hauling
- 850-900 cutting feet per minute chain speeds
- Dymax exclusive blaster chain
- Storage stand and lockouts for transport.



Cutting Rate and Efficiency = 1 - 2 ties per minute.
Cutting rates will vary and depend on ballast conditions and operator skill.

BB8.4G - SPECIFICATIONS AND HYDRAULIC FUNCTIONS

Dymax BB8.4G Ballast Blasters are available for 10-13.5T Excavators (all brands). They are provided with a standard diverter block manifold and wire connector.

Model	Hyd. Functions Required	Flow Ratings GPM (LPM)	Pressure PSI (bar)	Cut Length in. (mm)	Weight (w/o top) lbs. (kg)
BB8.4G	Motor - two way flow with case drain	19-20 (75-76)	4000 (275)	100.00	2,400
	Bar Swing - two way flow			(2540)	(1134)
	Bar Tilt - 24v electric service cable + 2nd case drain line req'd. Connects to diverter block manifold	4-6 (15-22)	3200 (220)		
		4-6 (15-22)	3200 (220)		
	HYDRAULIC KITS AVAILABLE				

Materials and specifications subject to change without notice.



DymaxRail 402 Miller Drive PO Box 297 Wamego KS 66547 USA
www.DymaxInc.com www.DymaxRail.com

Form No. 8280

toll free U.S. 1.800.530.5407 outside U.S. phone 1.785.456.2081 fax 1.785.456.8328