



Tie & Sleeper Handler

For Backhoe Loaders



Shown handling wood switch ties.



**Insert and
extract
in minutes!
GUARANTEED!**

The DymaxRail Tie and Sleeper Handler for backhoe loaders is the toughest, best engineered tie handler in the industry.

Available for all makes and models of backhoe loaders, the Tie and Sleeper Handler works with standard pin grab coupler systems or other types of couplers. It can also pin directly to the stick.

Each model is equipped with 360 degrees of hydraulic rotation and provided with a 12v diverter valve for operating the rotation circuit.

DymaxRail Tie and Sleeper Handlers for backhoe loaders come standard with two sets of carbide pads. The pads are easily replaced when worn. Carbide spiked pads are for handling wood ties while carbide overlay hardsurfaced pads are provided for handling concrete ties.

Each model features a single heavy duty squeeze cylinder that is well protected from the elements.

For more information contact DymaxRail or visit your local DymaxRail dealer. Call 785.456.2081 or 800.530.5407, or send email to sales@DymaxRail.com.

Tie and Sleeper Handler

Details

Model	Weight lbs. (KG)	Shipping Dimensions - L x W x H inches (mm)
Tie Inserter BHL	1130 (521)	21 x 28 x 52 534 x 712 x 1320

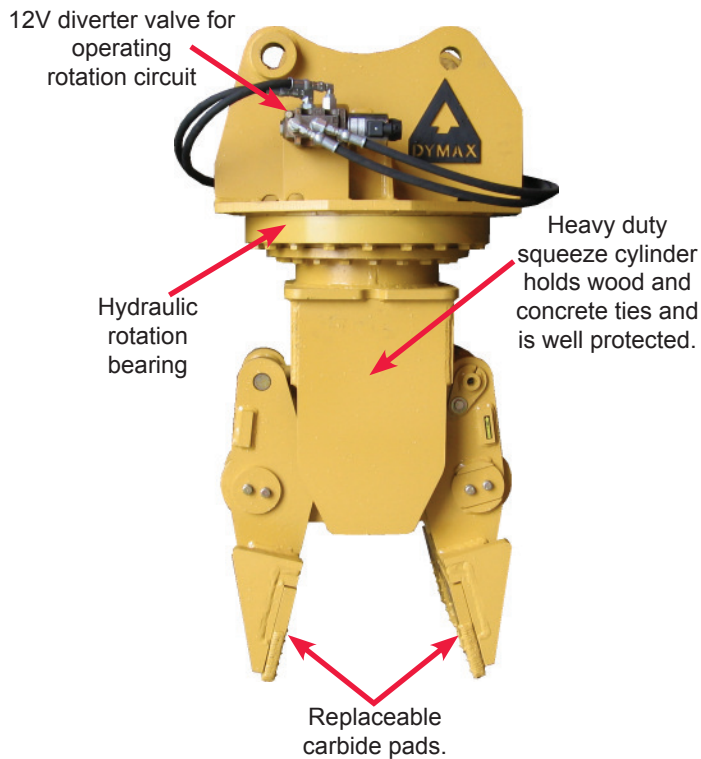
Hydraulic Functions Required, Flow Requirements

Squeeze Cylinder - 10 GPM @ 3,000 psi (37 LPM @ 206 bar)

Rotation Circuit - 10 GPM @ 3,000 psi (37 LPM @ 206 bar)

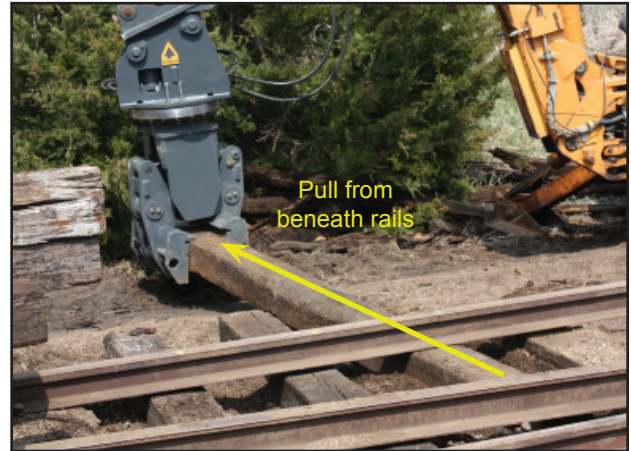
Squeeze Circuit (ties into extendible stick or other source available - must be two way flow)

Rotation Circuit - Requires electrical service cable, switch and works using the same hydraulic source as the squeeze circuit.

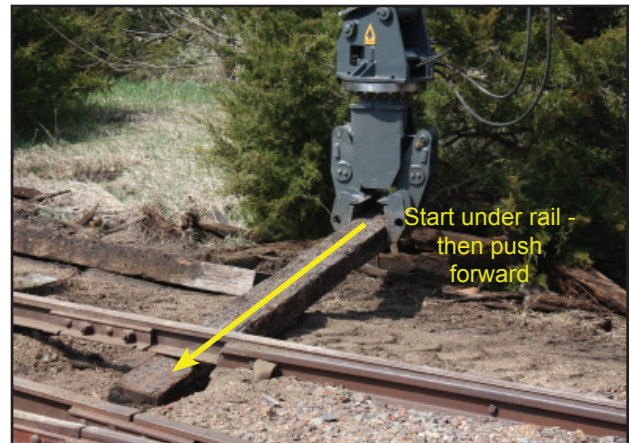


Extraction and Insertion

Don't manhandle those ties. Remove the spikes, then position your machine. Squeeze tie to be extracted and use the boom and stick functions on the machine to slide from beneath the rails.



Insertion is easy. Grab the new tie and push into position.



With a little practice, operators can replace ties in a matter of minutes, all with your backhoe loader.



Materials and specifications subject to change without notice.



DymaxRail 402 Miller Drive PO Box 297 Wamego KS 66547 USA
www.DymaxInc.com www.DymaxRail.com

toll free U.S. 1.800.530.5407 outside U.S. phone 1.785.456.2081 fax 1.785.456.8328

Form No. 8180