



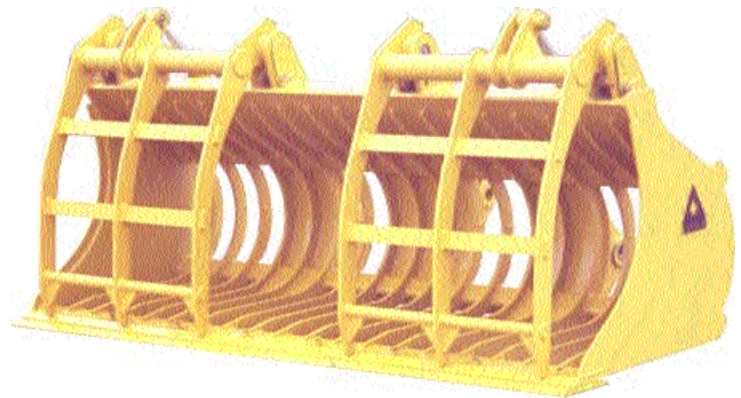
## Dymax Heavy Duty Skeleton Grapple Buckets

Loader Backhoes, Wheel Loaders  
Toolcarriers and Track Loaders

---

# SORT GRAB LOAD

---



---

**Dymax Heavy Duty Skeleton Grapple Buckets** for front loader backhoes, wheel loaders, toolcarriers and track loaders feature solid tine construction and are built to last. Bottom tines are comprised of high tensile strength steel.

Equipped with dual independent acting grapples which retract in line with cutting edge for loading against objects such as walls.

**Dymax Heavy Duty Skeleton Grapple Buckets** feature heavy duty cylinders. Hose and cylinder guards are available if specified.

**Dymax Heavy Duty Skeleton Grapple Buckets** can be setup with 4",6",8" or 10" tine spacing. If your application requires a specific spacing contact **Dymax Sales** for more information.

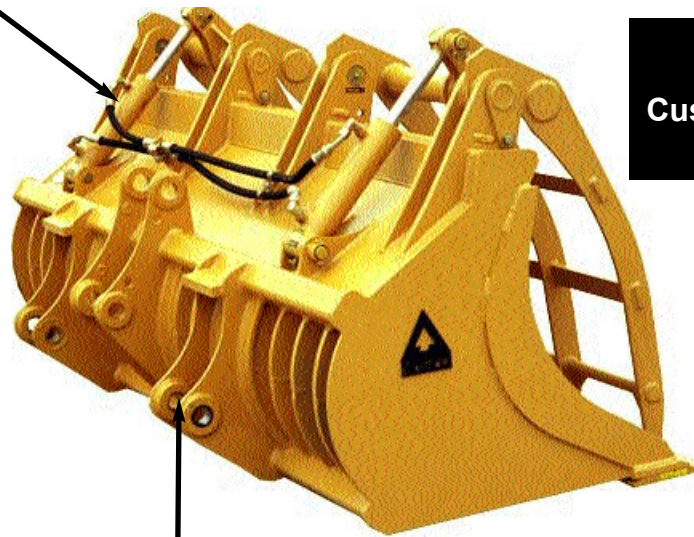
Available as direct mount pin on or with coupler hooks to work with the **Dymax coupler system** or other popular coupler models.

Available with replacement bolt on cutting edges or teeth.

If you have a specific application contact **Dymax sales 1-800-530-5407** or your local **equipment dealer**.

---

**Heavy duty cylinders provide superior power and clamp force**



**Solid tine grapples  
Custom designs available**

**Can be setup to fit specific couplers or pin on directly to loader arms**

Materials and specifications subject to change without notice.



**Dymax Inc. 402 Miller Drive PO Box 297 Wamego KS 66547 USA**  
**(p) 785-456-2081 (f) 785-456-8328 [www.Dymaxattachments.com](http://www.Dymaxattachments.com) [www.Treeshears.com](http://www.Treeshears.com)**

Form No. 7100 (9-06)