

DYMAX WORK TOOLS

10" RANCH AXE TREE SHEAR FOR SKID STEER LOADERS

OVERVIEW

The Dymax 10" Ranch Axe Tree Shears for skid steer loaders are ideal for general land clearing where materials are less than 10 inches in diameter. With a design based upon proven technology and years of experience, these rugged and dependable shears provide thousands of hours of effective pasture reclamation.

These tree shears are ideal for smaller machines, which do not have the operating capacity needed for the larger models. For moisture hogging cedars, junipers, and many other species, these tree shears are fast and efficient.

Dymax 10" Ranch Axe Tree Shears feature near-ground level cutting, eliminating stump problems and leaving the terrain smooth.

Pushbar Model

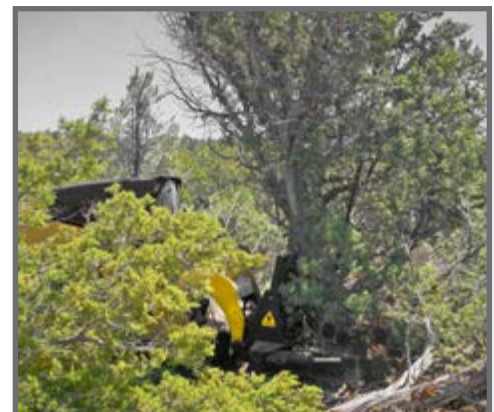


FEATURES AND SPECIFICATIONS

- **Designed for machines with a minimum of 1000 lbs of operating capacity, minimum flow rate of 13 GPM.**
- **Shearing cylinder is rated at 3000 psi and optimum results will be obtained near those levels.** (Do not exceed 3200 psi)
- **Hydraulic or manual rotating models are available.**
- **Optional pushbar models are available.**
- **All units are equipped with universal mount skid steer coupler hooks to work with most new model skid steer loaders.**
- **Near-ground level cutting eliminates stump problems**



Dimensions	Ranch Axe Tree Shear (Base Model)	Ranch Axe Tree Shear (Pushbar Model)
Model No.	DX-TS-LC-10in-SS-USS	DX-TS-LCPB-10in-SS-USS
Weight (lbs)	750	870
Height (in.)	23.00"	37.35"
Width at shear arms (in.)	60.50"	60.50"
Overall depth (in.)	47.39"	47.39"
Shear blade material	0.50" thick T1 milled knife edge	
Hydraulics (GPM) / (PSI)	13.00 GPM (minimum) / 3000 PSI (maximum)	



DYMAX Inc. Toll Free: 800.530.5407 (USA/CAN)
402 Miller Drive Office: +1.785.456.2081
Wamego, KS 66547 USA Fax: +1.785.456.8328

www.DYMAXinc.com
sales@DYMAXinc.com